

**DOWNLOAD OUR NEW
REFERENCE CATALOGUE TODAY!**

BICKLESHARDWARE.COM OR CALL (905) 356-8151



MATERIAL HANDLING & WAREHOUSE EQUIPMENT PROMOTION



ORANGE HAND CLEANER

- Fresh, natural orange citrus scent
- Pumice scrubbing particles for extra deep cleaning
- Easy removal of dirt, grease, paint, ink and most industrial soils
- Conveniently used with or without water
 - No harsh solvents
- Accepted for use in Canadian food processing facilities
- 3.6-L jug



**Model
No.**

**Promo
Price**

JG223

21.50

1/2" POLYPROPYLENE STRAPPING KIT

- Easy to use, efficient system for packaging, bundling and palletizing
- Contains:
 - 1 **PF985** 1/2" x 5600', 750-lb. strength polypropylene strapping
 - 1 **PE555** dispenser
 - 1 **PA555** 1/2" polypropylene sealer
 - 1 **PC939** polypropylene and polyester tensioner
 - 1 **PF408** 1/2" open seals, 2000/box



**Model
No.**

**Promo
Price**

PD023

599.00

KLETON

TILT-N-ROLL LADDERS

- Balanced design allows ladder to tilt into the rolling position
- 1-piece all-welded steel construction
- 30" high rails with 22" wide expanded metal steps
- Oversize 22" x 24" top step for easier worker movement
- Step Type: Expanded Metal
- Step Depth: 8"
- Overall Width: 25"
- Rise Height: 9"
- Capacity: 300 lbs.

MD603



KLETON

Model No.	No. of Steps	Platform Height"	Overall Depth"	Overall Height"	Promo Price
MD603	3	27	44	57	485.00
MD604	4	38	50	68	562.00
MD605	5	47	56	77	642.00

WYPALL® X60 WIPERS

- Use to apply thinners and solvents and for adhesive cleaning
- Remove cable lubricant, grease, and soil in tight areas
- Constructed without adhesives or binders means these wipers leave behind no residue
- Reinforced for extra scrubbing and cleaning power



NI331

Model No.	Desc.	Colour	Size L" x W"	Sheets /Case	Promo Price
JK973	Brag® Box	White	17 x 12-1/2	252	41.00
NI067	Roll	Blue	9-4/5 x 13-2/5	130	14.85
NI331	Pop-Up® Box	White	8-3/4 x 16-4/5	126	12.99
JD421	Jumbo Roll	White	12 x 13-2/5	1100	119.00

Pricing in effect until December 23, 2022 or while quantities last. Taxes and freight extra. Issue #SDM222100NA

Due to recent commodity and market volatility, prices are subject to change, and may vary without prior notice.

HEAVY-DUTY OUTDOOR STORAGE CONTAINERS

- Thick-walled, durable polyethylene construction
- Double-walled reinforced lid
- Molded forklift channels and recessed hand holes
- Capacity: 5.5 cu. Ft.
- 30" L x 24" W x 24" H

ND337



ND202

Model No.	Colour	Promo Price
ND337	Yellow	185.00
ND202	Grey	185.00

WHITE TARPAULINS

- Reinforced polypropylene rope sewn in welded hems
- Heavy-duty rust-resistant grommets every 3'
- Increased UV resistance for long life
- Water-resistant coating
- Thickness: 6 mils
- Material: Polyethylene
- Type: Heavy-Duty

KLETON

NI780



Model No.	Dimensions L' x W'	Promo Price
NI780	8 x 6	5.95
JC513	30 x 20	74.50
JC514	40 x 30	150.00

* Finished sizes may vary due to hem allowance

GREEN TARPAULINS

- Reinforced polypropylene rope sewn in welded hems
- Heavy-duty rust-resistant grommets every 35"
- Increased UV resistance for long life
- Water-resistant coating
- Thickness: 9 mils
- Material: Polyethylene
- Type: Heavy-Duty
- Silver side provides heat and UV light diversion

JB567

KLETON



Model No.	Dimensions L' x W'	Promo Price
JB567	8 x 6	8.42
JB568	10 x 8	14.20
JB569	12 x 10	21.00

* Finished sizes may vary due to hem allowance

SALT & SAND CONTAINERS

- Waterproof and lockable which makes it ideal for many other outdoor storage uses aside from storing loose or bagged salt, sand, or ice melter
- It can also hold garden supplies, sporting goods, pool supplies, tools, garbage/recyclables, or anything else you want to safely store
- Constructed of rugged BPA-free UV-resistant polyethylene
- Built-in pockets for forklifts allow the bins to be moved without emptying them
- Capacity: 4.24 cu. ft.
- 21" L x 27" W x 26" H

NO615

JK232



Model No.	Description	Colour	Promo Price
NO614	Salt & Sand Container	Yellow	132.00
NO615	Salt & Sand Container	Grey	132.00
JK232	Polyethylene Scoop	Yellow	5.99

HEAVY-DUTY OUTDOOR STORAGE CONTAINERS

- Thick-walled, durable polyethylene construction
- Double-walled reinforced lid
- Molded forklift channels and recessed hand holes
- Capacity: 10 cu. Ft.
- 48" L x 24" W x 24" H

NM948



Model No.	Colour	Promo Price
NM947	Yellow	289.00
NM948	Grey	289.00

INSULATED TARPAULIN

- Lightweight and flexible, moisture resistant insulated tarpaulin
- Manufactured with 3/16" closed cell polyethylene foam insulation
- R-value is maintained in damp cold conditions
- Durable, water resistant polyethylene shell
- Heavy-duty rust resistant grommets every 2'
- Thickness: 8 mils
- Length: 20'
- Width: 12'
- Colour: Orange



Model No.	Promo Price
JD420	199.00



SNOW ROOF RAKE

- Ideal for removing any kind of debris from roofs
- Prevents roof damage by removing ice dams & heavy snow
 - Shipped knocked down
- Lightweight handle extends to 16'
 - Blade Material: Polypropylene
 - Blade Width: 24-3/4"
 - Blade Height: 6"
 - Handle Length: 61"
 - Handle Material: Aluminum
 - Handle Type: Straight

aurora tools®

Model No.	Promo Price
NN009	53.85

POLY SNOW SHOVELS

- Blade Material: Polypropylene
- Handle Material: Steel
- Handle Type: D-Grip
- **NM809** includes a steel wear strip

NM809

NM810



aurora tools®

Model No.	Blade Dim. W" x H"	Overall Length"	Promo Price
NM809	19-3/4 x 13-1/8	50-3/4	33.85
NM810	19-3/4 x 13	51-3/8	33.05

POLY SNOW PUSHERS

- Blade Material: Polypropylene
- Handle Material: Steel
- Handle Type: D-Grip
- **NM812** includes a steel wear strip

NM812

NM811



aurora tools®

Model No.	Blade Dim. W" x H"	Overall Length"	Promo Price
NM811	24-1/2 x 10-3/4	54-1/2	34.65
NM812	21-1/4 x 9-1/4	50-1/2	27.95

SCOOP SHOVELS

- Perfect for moving and scooping lightweight granulated materials
- Lightweight construction for comfort and productivity
- Hardwood handle with aluminum blade resistant to rust
- Blade Material: Aluminum
- Handle Material: Wood
- Blade Size: 14" x 18"

TYX063

NM985



aurora tools®

Model No.	Handle Type	Handle Length"	Overall Length"	Promo Price
TYX063	Straight	45-3/4	63-1/2	44.95
NM985	D-Grip	24-1/2	46-5/8	39.95

SCRAPERS

- Top-of-the-line industrial grade tools designed for intense and continuous use
- Handle Material: Ashwood
- Handle Type: Straight
- Handle Length: 48"
- Blade Material: Tempered steel



ND115

Model No.	Series	Blade"	Promo Price
ND067	Nordic™	7 x 5-1/2	24.95
ND040	Alpine™	7 x 6	47.95
ND115	Yukon™	8-1/2 x 6-1/4	57.95

YUKON™ SNOW SHOVEL

- Top-of-the-line industrial grade tools designed for intense and continuous use
- Blade Material: Steel
- Blade Width: 30"
- Blade Height: 12"
- Handle Length: 42-3/4"
- Handle Material: Wood
- Handle Type: D-Grip



Model No.	Promo Price
NE312	47.95

GENERAL PURPOSE PAILS

- Snap on lids available: Dry seal type or gasket type for liquid handling
- Lids sold separately



ROPAK

CB040

Model No.	Description	Dim. Dia." x W"	Promo Price
CB040	4-L Pail w/Plastic Handle	8-1/4 x 6	7.90
CB043	11.4-L Pail w/Steel Handle	11 x 9	14.50
CB039	Gasket Lid for CB040	8-1/2 x 1/2	3.70
CB041	Dry Seal Lid for CB043	11-3/8 x 5/8	6.00

ROUND STORAGE CONTAINERS

- Large ergonomic pull-tab lids makes for easy opening
- Double seal lids help minimize leaking, spoilage and spills
 - Dishwasher safe, durable plastic construction
- Ergonomic, easy-grip handles for comfort and control
 - Lids sold separately
 - Colour: White

CB583



Model No.	Outside Dim. D" x H"	Capacity	Promo Price
CB583	8-1/2 x 4	2 qt/1.89 L	5.36
CB585	8-1/2 x 7-4/5	4 qt/3.79 L	7.46
CB589	10 x 10-3/5	8 qt/7.57 L	10.69

UTILITY BOXES

- Durable, commercial grade plastic
- 20" L x 15" W x 5" H
- Capacity: 17.5 L

CD445



Model No.	Description	Promo Price
CD445	Grey Box	8.99
CD446	White Box	11.30
CD662	Grey Cover	15.70

MOBILE INGREDIENT BINS WITH SLIDING LID



- Slant front
- Seamless construction, rounded corners and smooth walls make these bins easy to clean and bacteria free
- Clear, see-through lid with slide-back feature ideal for placing bin under counters
- Includes a scoop hook allowing scoop to be stored in bin and out of product, an ideal solution where cross contamination is a concern and a 32-oz scoop
- Made of FDA compliant materials
- USDA meat and poultry listed
- NSF Certified



CA618

Model No.	Capacity cu. ft.	Overall Dim. W" x D" x H"	Promo Price
CA616	2.75	13-13/100 x 29-1/4 x 28	394.00
CA618	4.125	18 x 29-3/4 x 28	448.00

QUANTUM NESTING TOTES

- High-density polyethylene
- Rolled top rim for comfortable grip
 - Six 1/4" position drill holes on bottom allow for drainage
 - Injection molded high-density polypropylene
- Made of FDA compliant materials

CD434



Model No.	Dimensions W" x D" x H"	Colour	Promo Price
CD244	19 x 24-1/2 x 9.5	Grey	36.00
CD434	19 x 24-1/2 x 9.5	Blue	36.00

CROSS STACK BINS



- Ideal for production, assembly and order picking
- Injection molded from high impact polyethylene; will not crack or rust and easy to clean
- Can be turned 90° to cross stack
- Built-in handle and bottom grooves for easy handling
- Capacity: 100 lbs.
- FDA approved



CD246

Model No.	Outside Dim. W" x D" x H"	Colour	Promo Price
CD584	11 x 17.25 x 12	Grey	19.99
CD585	11 x 17.25 x 12	White	19.99
CD246	16 x 25.125 x 8.5	Grey	26.90
CD248	16 x 25.125 x 8.5	White	26.90

SHELF BINS

- Tough, durable and high density bin
- Designed for use on 12", 18" and 24" deep shelving
- Features a built-in rear hang-lock which allows bin to tilt out for easy access
- Wide hopper front allows for complete access
- Capacity: 30 lbs.
- Material: Polypropylene



CB861

Model No.			Outside Dim.			Promo Price
Blue	Yellow	Red	W"	x D"	x H"	
CC992	CC993	CC994	2-3/4	x 11-5/8	x 4	3.14
CC998	CC999	CD001	4-1/8	x 11-5/8	x 4	2.99
CD005	CD006	CD007	6-5/8	x 11-5/8	x 4	4.64

DIVIDERS

Model No.	Description	Promo Price
CB861	4-1/8" wide	0.73
CB862	6-5/8" wide	0.79

HEAVY-DUTY DRAWER CABINETS

- Heavy-duty parts cabinets feature break resistant high impact clear plastic "scoop" drawers for easy removal of small parts, with two adjustable compartment dividers
- Drawers measure 2 7/8" W x 5 1/2" D x 1 7/8" H each
- Welded steel cabinets are finished in grey powder coat
- Colour: Grey



CA898



CA899

DURHAM MFG
Est. 1922

Model No.	Dimensions W" x D" x H"	No. of Drawers	Promo Price
CA899	25 1/2 x 6 1/2 x 21 3/4	64	359.00
CA898	16 1/2 x 6 1/2 x 11 1/4	20	172.00

FLIPAK® POLYPROPYLENE PLASTIC (PP) DISTRIBUTION CONTAINERS

- Offer all the same benefits as the polyethylene containers, plus provide easy content identification
- Polypropylene (PP) is the same family as polyethylene
- Polypropylene's advantages over polyethylene include its greater stiffness and elevated use
- Temperature range: 30°F - 150°F
- Colour: Clear

ORBIS



CC128



CF558

Model No.	Overall Dimensions W" x D" x H"	Outside Dimensions Top L" x W"	Outside Dimensions Bottom L" x W"	Volume Cu. Ft.	Nesting Ratio	Promo Price
CC128	11.8 x 9.8 x 7.7	11.8 x 9.8	9.3 x 7.0	0.3	2.8:1	35.10
CF558	21.8 x 15.2 x 9.3	21.8 x 15.2	19.1 x 13.5	1.4	4.4:1	43.90

STACK & HANG BINS

- Innovative stacking design allows for greater visibility and easier access to contents
- Distortion-free from -40°C to 120°C
- Unaffected by oil, alkaline and most acids
- Ideal in production or for store display

KLETON



CB260



CC234



CB261



CC242

Model No.				Outside Dim.			Promo Price
Blue	Green	Red	Yellow	W"	x D"	x H"	
CB260	CC234	CC242	CB261	4-13/16	x 7-1/8	x 3-3/16	3.40
CB262	CC235	CC243	CB263	5-7/8	x 9-13/16	x 4-11/16	5.98
CB264	CC236	CC244	CB265	8-3/16	x 14	x 6-3/16	11.44

DOCK LIGHT

- Built-in on-off switch
- Durable stainless steel cage for better protection of the light
- Bracket mounted for easy installation
- Arm sections are adjustable in all directions
- Extended Arm Length: 40"
- Lamp Type: LED
- Wattage: 50W
- Head Type: Metal
- Lumens: 5500

auroratools®



Model No.	Promo Price
XI316	289.00

HEAVY-DUTY DOCK LIGHT

- LED array rated for 50000 hours
- 40" full extension arm with five pivot points
- Rated for outdoor use
- 10' power cord with 5-15P plug
- Certified for sale in Canada by an accredited certification body



Model No.	Promo Price
XD022	239.00

LIND  EQUIPMENT

WALL PROTECTORS

- Wall protectors help prevent damage to walls in areas with forklifts, hand trucks and other warehousing traffic
- These guards are high-visibility yellow
- Made with high density polyethylene (HDPE)
- Crack and chip resistant
- Anchors not included
- Colour: Yellow
- Sold in sets of 2 protectors



Model No.	L"	Overall Dim.				Promo Price
		x	W"	x	D"	
KH996	42	x	2	x	6	215.00/Set
KH997	42	x	2	x	10	245.00/Set

TRAILER STABILIZING JACK

- Keeps tractorless trailers leveled while being loaded or unloaded
- Prevents accidents if wheel support collapses
- Stabilizes vehicle against load shifts
- 8" dia support pad
- 100 000 lbs. supporting capacity each and 40 000 lbs. lifting capacity
- Lifting Capacity: 20 tons
- Lowered Height: 39-1/2"
- Raised Height: 51"
- Recommended use in pairs

KLETON

Model No.	Promo Price
KH777	429.00



LOAD BINDERS

- Forged and heat treated
- With two strong, full rotation swivels
- Profiled mid-section to give extra stability
- Working load limit rating embossed on handle
- Type: Ratchet Tie Down



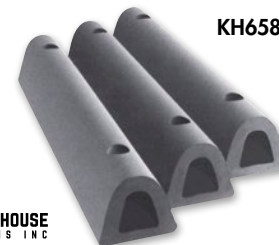
LT463

 **KINEDYNE**
The Cargo Control People!™

Model No.	Working Load Limit	Chain Size"	Promo Price
LT462	2600 lbs. (1.3 tons)	1/4 - 5/16	35.20
LT463	5400 lbs. (2.7 tons)	5/16 - 3/8	51.10
LT464	9200 lbs. (4.6 tons)	3/8 - 1/2	65.40

EXTRUDED RUBBER DOCK FENDERS

- Guard against damaging impact
- Made of age, weather and abrasion-resistant synthetic rubber
- Easy to install and the trim appearance makes them well suited for use on trucks and truck docks
- Half oval shape allows radius to widen upon impact creating better deflection
- Width: 4-1/2"
- Depth: 3-3/4"
- Type: Fender Drilled



KH658

 **IDEAL WAREHOUSE**
INNOVATIONS INC

Model No.	Length"	Anchor Holes	Promo Price
KH658	12	2 req., 6"	34.30
KH659	18	2 req., 12"	51.10
KH661	36	3 req., 15"	83.90

ROTARY TYPE DRUM PUMP

- For use with most medium viscosity petroleum fluid, light non-flammable and non-combustible fluids
- Dual directional operation allows pump to both empty and refill containers
- Steel discharge spout and polyethylene discharge hose of 1" diameter and 55" long included
- Transfer Rate: 8 oz. per revolution
- Fits Gallon Size: 30-55 Gal.
- Body Material: Steel, Cast Iron
- Adaptor Type: 2" Bung
- Wetted Components: Buna-N, cast iron, polyethylene, polypropylene and steel

KLETON

Model No.	Promo Price
DA528	89.95



LEVER TYPE DRUM PUMP

KLETON

- For use with most dispensing and transferring non-corrosive and petroleum based fluids
- Cushioned vinyl grip handle
- Discharge spout can be rotated 180° and removed to expose garden hose threaded outlet
- Transfer Rate: 11 oz./Stroke
- Fits Gallon Size: 30-55 Gal.
- Body Material: Steel
- Adaptor Type: 1-1/2", 2" Bung
- Pump Material: Steel
- Wetted Components: Brass, Buna-N, polyethylene, steel and zinc

Model No.	Promo Price
DC124	49.95



LEAK CONTAINMENT DRUM DOLLIES

- Polyethylene dolly will not dent, corrode, or rust
- Handles 30 imp. Gal./37 US gal.& 45 imp. Gal./55 US gal. drums
- Solid bottom construction with a 2" lip contains spills up to 5 L
- Overall diameter: 24-1/4"
- Spill Capacity: 1.5 US Gal.
- Load Capacity: 1000 lbs.

ZENITH®
Safety Products

DC465



Model No.	Wheel Material	Caster Size"	Height"	Promo Price
DC465	Polyurethane	3	7.625	161.00
DC466	Polyolefin	3	7.625	149.00
DC467	Polyolefin	4	8.625	161.00

FUSIBLE LINK SELF-CLOSING DRUM COVER

- Convert open top 55 US gallon/45 imp. gallon steel drums into fire-safe receptacles for combustible trash
- A replaceable fusible link assembly inside the cover melts at 165°F, automatically slamming the cover shut if a fire occurs in the drum
- Steel construction; solvent resistant, red baked-on-enamel finish
- Fits drums from 22-1/2" to 22-3/4" in diameter
- FM approved

Justrite

Model No.	Promo Price
DA097	299.00



VERTICAL DRUM GAUGE

- Accurate "At-A-Glance" monitoring
- Graduated in gallons, litres, quarters and eighths full
- Heavy steel and plastic construction with leak-proof duro nitrite gaskets
- Resistant to oil and many chemicals

BASCO
The Safe & Sound Container Products®



Model No.	Size"	Promo Price
DA068	2	93.50

POLYETHYLENE DRUMS

- UN-approved plastic drums are manufactured using state-of-the-art technologies to meet the stringent demands of chemical compatibility with hazardous and non-hazardous products as well as reliability and safety requirements
- Drums are made from a high molecular weight, high-density polyethylene resin
- Drum Size: 55 US gal (45 imp. gal.)
- Lined/Unlined: Unlined
- Open Top/Closed Top: Open Top
- UN Compliance: 1H2/Y250/S
- Capacity: 55 Gal.
- Lid included
- Fittings not included

DC525



Model No.	Colour	Promo Price
DC525	Blue	195.00
DC527	Black	212.00

INDUSTRIAL DUTY MOBILE SERVICE BENCH

- Designed for moving heavy parts and tools to the job site
- Provides a strong maintenance-free surface to work on
- 16-gauge all-welded steel construction
- Laminated hardwood top
- Configuration: Door & Drawers
- Capacity: 316 lbs.
- Style: 4 Drawers/1 Door



Model No.	Overall Dimensions					Promo Price
	W"	x	D"	x	H"	
ML327	42	x	24	x	37	2322.00

EXTRA HEAVY-DUTY WORKBENCHES - PEDESTAL BENCH

- Designed for workshop applications
- Feature 1 3/4" thick solid laminated hardwood top, mounted on two all-welded pedestals with two shelves each
- Pedestals are 18" W x 24" D x 32" H
- Shipped knocked down
- Capacity: 2500 lbs.
- Configuration: Shelf



Model No.	Overall Dimensions				Promo Price	
	W"	x	D"	x	H"	
FF121	72	x	30	x	34	993.00

OPEN FLOOR STYLE SHOP DESK

- Durable carbon steel construction
- Ideal for receiving/shipping clerks, watchmen and shop foremen
- Two compartment organizer and slightly sloped 43" height writing surface
- Optional caster kit to convert to mobile unit
- Material: Steel
- Colour: Grey

KLETON



Model No.	Overall Dimensions W" x D" x H"				Promo Price
FI519	34-1/2	x	30	x 53	339.00

EXTRA HEAVY-DUTY WORKBENCHES

- All-welded construction features a wood-filled 3/16" steel top with 11 gauge steel legs and stringers
- Standard bolt-down footplates
- Overall height is 34"
- Capacity based on evenly distributed weight
- Work Surface: Steel
- Capacity: 5000 lbs.

FF494



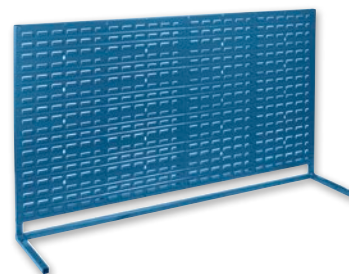
KLETON

Model No.	Overall Dimensions					Promo Price
	W"	x	D"	x	H"	
FF494	72	x	30	x	34	1199.00
FF495	72	x	36	x	34	1319.00

LOUVERED BENCH RACK

- All-welded louvered bench rack
- Provides tool and storage for assembly or repair operations when combined with plastic parts bin
- Designed to be permanently installed on a 72" wide workbench
- Constructed of 1 1/4" square tube frame
- Rack Type: Bolt-on

KLETON



Model No.	Overall Dimensions					Promo Price
	W"	x	D"	x	H"	
CB364	72	x	15	x	40	623.00

CABINET STYLE SHOP DESK

- Durable carbon steel construction
- Same features as the open floor style shop desk, with an added double door locking cabinet
- Two compartment organizer and slightly sloped 43" height writing surface
- Optional caster kit to convert to mobile unit
- Material: Steel
- Overall dimensions: 34-1/2" W x 30" D x 53" H
- Colour: Grey

FI520

FI521



KLETON

Model No.	Description	Promo Price
FI520	Cabinet Style Shop Desk	483.00
FI521	Optional Caster Kit	63.00



UTILITY CABINETS

- Includes handle and hasp for padlock
- These handy cabinets can be used to store a wide range of maintenance items
- Keyhole slots in back allow wall hanging
- Lock attachment is built in hasp has diameter of 1/4"
- No. of Shelves: 2
- Colour: Grey
- Material: Steel
- Shelf Capacity: 35 lbs.
- Assembly Type: Welded (Assembled)
- Sections: 2 Adjustable

CB636



DURHAM MFG
Est. 1922

Model No.	Dimensions W" x D" x H"	Promo Price
CB636	13-3/4 x 12-3/4 x 30	203.00
CB637	19-7/8 x 14-1/4 x 32-3/4	261.00

DEEP LOW-BOY STORAGE CABINETS

- Made of cold rolled steel sheets of commercial quality
- Includes recessed handle and cylinder lock
- Fully adjustable shelves
- Features a lock
- Dimensions: 36" W x 18" D x 40" H
- No. of Shelves: 2
- Shelf Capacity: 200 lbs.
- Assembly Type: Welded (Assembled)



PERFIX.CA



FL781

Model No.	Colour	Promo Price
FL781	Grey	551.00
FL782	Beige	551.00

COMBINATION STORAGE CABINETS

- Made of cold rolled steel sheets of commercial quality
- Features one wide shelf, 5 half shelves, and a hanging section with rod
- Dimensions: 36" W x 18" D x 72" H
- No. of Shelves: 6
- Shelf Capacity: 150 lbs.
- Assembly Type: Welded (Assembled)



PERFIX.CA

Model No.	Colour	Promo Price
FL794	Grey	879.00
FL793	Beige	879.00
FL795	Black	879.00



FL795

STORAGE CABINET

- Designed for easy assembly
- One-piece base serves as additional shelf
- Locking handle for added security
- No. of Shelves: 4
- Colour: Grey
- Material: Steel



KLETON



Model No.	O.A. Dimensions W" x D" x H"	Shelf Capacity	Promo Price
FN427	48 x 24 x 78	300 lbs.	591.00

ROUGH & TOUGH STORAGE CABINET

- Manufacturer's 99 year limited warranty
- Overall cabinet height: 78" including 6" legs
- Dimensions: 36" W x 24" D x 72" H
- No. of Shelves: 4
- Colour: Grey
- Material: Steel
- Shelf Capacity: 1900 lbs.
- Assembly Type: Welded (Assembled)

StrongHold

Model No.	Promo Price
FG816	3236.00



WARDROBE/STORAGE CABINET

- Manufacturer's 99 year limited warranty
- Overall cabinet height: 78" including 6" legs
- Dimensions: 48" W x 24" D x 72" H
- No. of Shelves: 5
- Closet Shelves: 4
- Colour: Grey
- Material: Steel
- Shelf Capacity: 1500 lbs.
- Assembly Type: Welded (Assembled)

StrongHold

Model No.	Promo Price
FG839	4245.00



CLEAN LINE™ LOCKERS

- **Single tier locker includes:** One hat shelf, three coat hooks and aluminum recessed padlock handle
- **Double and Triple lockers include:** Two coat hooks per opening and aluminum recessed padlock handle
- Prime grade cold rolled steel locker
- All welded frame and door
- Riveted body
- Frames are resistance welded on all four corners to form a rigid structure
- Colour: Grey
- Top Style: Basic
- Non-Perforated
- Bank Width: 12"
- Overall Depth: 18"
- Overall Height: 72"
- Door Width: 10"
- Inside Depth: 18"
- Bodies: 24 gauge
- Doors: 20 gauge
- Frames: 16 gauge
- Shelves: 24 gauge



FJ151

FJ155

FJ159

FJ171



Model No.	Bank of	Door Height"	Overall Width"	Promo Price
-----------	---------	--------------	----------------	-------------

SINGLE TIER

FJ151	1	65-1/2	12	287.00
FJ152	2	65-1/2	24	495.00
FJ153	3	65-1/2	36	740.00
FJ154	4	65-1/2	48	988.00

DOUBLE TIER

FJ155	1	32	12	316.00
FJ156	2	32	24	556.00
FJ157	3	32	36	839.00
FJ158	4	32	48	1124.00

TRIPLE TIER

FJ159	1	21	12	396.00
FJ160	2	21	24	751.00
FJ161	3	21	36	1127.00
FJ162	4	21	48	1500.00

LOCKERETTES

FJ171	1	10	12	471.00
FJ172	2	10	24	924.00
FJ173	3	10	36	1380.00
FJ174	4	10	48	1844.00

WALL HUNG LOCKERS

- Four compartments measuring 12" W x 18" D x 12" H
- Prime grade cold rolled steel locker
- Features an all welded frame with panels and doors assembled with rivets
- Frames are resistance welded on all four corners to form a rigid structure
- Colour: Grey



Model No.

Promo Price

FJ919

671.00

LOCKER ROOM BENCHES

- Necessary for any locker room
- Features black powder coated legs that can be used free-standing, or bolted to the floor (wood-top locker benches)
- Material: Wood
- Overall Height: 16-1/2"
- Overall Width: 9-1/4"

RL871

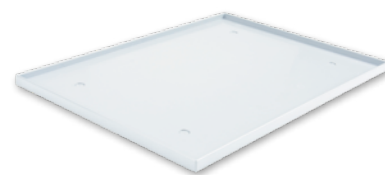


Model No.	Overall Length"	Weight lbs.	Promo Price
RL871	48	23.5	202.00
RL872	60	28	218.00

LOCKER BASE INSERTS

- Cost-effective corrosion-proof plastic
- Durable and maintenance-free
- 100% Recyclable
- Available in 9 different colours upon request
- Fits Locker Size: 12" x 18"
- Material: Plastic
- Length: 16.125"
- Width: 11.875"
- Height: 0.5"

F1720



Les Entreprises
Charlize
FONDS DE CASIER
LOCKER BOTTOMS

Model No.	Colour	Promo Price
F1720	Light Grey	24.49
F1721	Beige	24.49
F1722	Black	24.49
FL591	Dark Grey	24.49

BLUE CASTERS

- High load capacity, rolls easily and quietly on all floors
- Non-marking, excellent floor protection
- Zinc chrome plated finish provides corrosion resistance
- Elastic rubber tread rejects floor debris
- Wheel Material: Rubber
- Caster Type: Rigid
- Frame Material: Steel
- Bolt Hole Spacing: 2-3/8" x 3-1/8"
- Bolt Hole Size: 3/8"
- Plate Size: 3-3/8" x 4"

KLETON



ML342



ML338

Model No.	Wheel Dia."	Cap. lbs.	Style	Tread Width"	Overall Height"	Promo Price
MO512*	3	285	Rigid	1-1/4	4-1/4	9.30
MO513*	3	285	Swivel	1-1/4	4-1/4	13.80
			with Brake			
ML334	4	350	Rigid	1-3/8	5	13.30
ML342	4	350	Swivel	1-3/8	5	18.20
			with Brake			
ML338	5	400	Rigid	1-3/8	6	18.30
ML345	5	400	Swivel	1-3/8	6	24.80
			with Brake			

* Roller Bearing

SANDWICH CASTERS

- Smooth rolling and quiet
- Non-marking white nylon bonded to elastic rubber
- Chrome zinc finish for corrosion resistance
- Double raceway
- Capacity: 440 lbs.
- Wheel Material: Nylon
- Frame Material: Steel
- Tread Width: 1-3/8"
- Bolt Hole Spacing: 3-1/8" x 2-1/3"
- Bolt Hole Size: 5/16"
- Plate Size: 3-1/3" x 4-1/8"
- Swivel Radius: 3 4/5"
- Brake Type: Top Locking

MN441



KLETON

Model No.	Wheel Dia."	Style	Overall Height"	Promo Price
MN441	4	Swivel	5 1/8	14.80
MN443	4	Swivel with Brake	5 1/8	17.40
MN445	5	Rigid	6 1/8	15.70
MN446	5	Swivel with Brake	6 1/8	19.40

POLYOLEFIN CASTERS

- Rolls easily and quietly on all floors
- Lightweight and economical
- Non-marking, easy to maintain, steam cleanable
- High impact strength
- Capacity: 250 lbs.
- Frame Material: Steel
- Tread Width: 1-1/4"
- Bolt Hole Spacing: 1-3/4" x 2-3/4"
- Bolt Hole Size: 5/16"
- Plate Size: 2-5/8" x 3-3/4"

KLETON



ML395

Model No.	Wheel Dia."	Style	Overall Height"	Promo Price
ML392	3	Rigid	4-1/2	5.60
ML391	3	Swivel	4-1/2	7.30
ML394	4	Rigid	5-1/4	7.20
ML393	4	Swivel	5-1/4	8.20
ML396	5	Rigid	6-1/8	8.40
ML395	5	Swivel	6-1/8	9.90

MOLD-ON CASTERS

- Molded rubber wheel permanently bonded to spoked cast iron core
- Iron centre gives it strength while the molded rubber offers smooth and quiet operation
- Protects loads and surfaces
- Won't damage warehouse or factory floors
- Wheel Material: Rubber
- Frame Material: Steel
- Tread Width: 2"
- Bolt Hole Spacing: 2-7/8" x 3-1/3"
- Bolt Hole Size: 7/16"
- Plate Size: 4" x 4-1/2"

KLETON

MN451



ML853

Model No.	Wheel Dia."	Cap. lbs.	Style	Promo Price
ML847	5	400	Rigid	17.20
ML846	5	400	Swivel	21.30
ML850	6	500	Rigid	18.90
ML851	6	500	Swivel with Brake	26.60
MN451	6	500	Butterfly Side	25.90
ML853	8	600	Rigid	27.40
ML852	8	600	Swivel	33.10
MN452	8	600	Butterfly Side	29.90

PNEUMATIC CASTERS

- Four ply pneumatic casters offer smooth and quiet rolling over the roughest surfaces and outdoor terrain
- Shock absorbing properties give the greatest possible protection to both the load and floor
- The "Air cushion" feature will transport the most fragile material and instruments without damage
- Not recommended for floors with metal shavings or corrosive chemicals

KLETON

MN223



Model No.	Wheel Dia."	Cap. lbs.	Style	Tread Width"	Frame Material	Bolt Hole Spacing"	Bolt Hole Size"	Plate Size"	Height"	Promo Price
MN221	8	350	Rigid	2	Steel	2-3/4 x 3-3/8	13/32	4 x 4-1/2	10	25.20
MN222	8	350	Swivel	2	Steel	2-3/4 x 3-3/8	13/32	4 x 4-1/2	10	28.80
MN223	10	400	Rigid	3	Steel	2-3/4 x 3-3/8	13/32	4 x 4-1/2	12	31.20
MN224	10	400	Swivel	3	Steel	2-3/4 x 3-3/8	13/32	4 x 4-1/2	12	33.60

STANDARD-DUTY SAFETY CUTTER FOR STEEL STRAPPING

- Safety design holds strapping in place to prevent injuries from flying ends
- Rubber pads gently release strapping when being cut
- Cuts Strapping Width: 3/8" to 1-1/4"
- Cuts Strapping Thickness: 0.036"



KLETON

Model No.	Promo Price
PC446	93.75

STEEL STRAPPING TENSIONER

- Standard
- Accepts steel strapping up to 0.035" thick
- Fast and easy operation
- Medium/heavy tension
- Type: Feed-Wheel
- Fits Strap Width: 3/8" - 3/4"

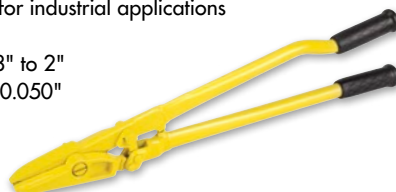


KLETON

Model No.	Promo Price
PC938	135.00

HEAVY-DUTY SAFETY CUTTERS FOR STEEL STRAPPING

- Powerful drop-forged steel design
- Heavy-duty performance for industrial applications
- 24" long
- Cuts Strapping Width: 3/8" to 2"
- Cuts Strapping Thickness: 0.050"



KLETON

Model No.	Promo Price
PC479	179.00

STEEL STRAPPING

- Strongest material for a wide range of strapping requirements
- Ideal for heavy shipments that require stronger protection over polypropylene and polyester
- Black painted and waxed finish
- Oscillated wound
- Strap Width: 3/4"
- Core Dimensions: 16" x 3"

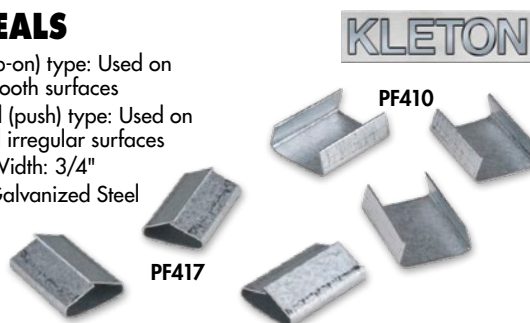


KLETON

Model No.	Strap Thickness"	Feet /Coil	Strength lbs.	Promo Price
PG007	0.015	2385	1360	211.00
PF406	0.020	1960	1800	211.00
PG008	0.023	1580	2070	211.00

STEEL SEALS

- Open (snap-on) type: Used on flat and smooth surfaces
- Fully closed (push) type: Used on curved and irregular surfaces
- Fits Strap Width: 3/4"
- Material: Galvanized Steel



Model No.	Type	Qty /Box	Promo Price
PF410	Open	2000	89.90/Box
PF413	Open	5000	225.00/Box
PF417	Closed	2000	101.00/Box
PF420	Closed	5000	234.00/Box

MANUAL SEALLESS STEEL STRAPPING TOOL

- Multi purpose tool cuts, tightens and seals for optimal working efficiency
- Keeps straps secure with punch joint sealing
- Made to withstand high volume usage
- Type: Push Bar
- Fits Strap Width: 1/2" - 3/4"
- Fits Strapping Thickness: 0.015" - 0.027"



KLETON

Model No.	Promo Price
PF705	1237.00

POLYPROPYLENE STRAPPING

- Ideal for light-duty palletizing and bundling
- Lightweight, easy-to-use and recyclable
- Grade: Manual
- Strap Width: 5/8"
- Strap Thickness: 0.030"
- Colour: Black
- Strength: 700 lbs.
- Feet/Coil: 6000'
- Core Size: 8" x 8"



KLETON

**Model
No.**

**Promo
Price**

PF988

108.00

POLYESTER STRAPPING

- Ideal for medium to heavy-duty palletizing
- Moisture-resistant, safe to handle and recyclable
- Approved by the Association of American Railroads (AAR)
- Grade: Manual
- Strap Width: 5/8"
- Strap Thickness: 0.035"
- Colour: Green
- Strength: 1400 lbs
- Sold/Priced Per: Coil
- Feet/Coil: 4000'
- Core Size: 16" x 6"



KLETON

**Model
No.**

**Promo
Price**

PG175

139.00

POLYPROPYLENE STRAPPING SEALER

- Heated treated steel construction for superior strength and durability
- Prevents strapping from loosening during transit
- Long 18" handle requires less effort
- Use on open steel seals
- Accepts polypropylene strapping between 0.023" to 0.039" thick
- Fits Strap Width: 5/8"



KLETON

**Model
No.**

**Promo
Price**

PA556

81.75

POLYPROPYLENE & POLYESTER STRAPPING TENSIONER

- Ideal for applications on flat surfaces
- Accepts strapping 3/8 - 3/4" wide and up to 0.035" thick
- Superior design and performance
- Premium copper bushings
- Fits Strap Width: 3/8" - 3/4"



KLETON

**Model
No.**

**Promo
Price**

PC939

96.75

POLYESTER STRAPPING SEALER

- Heat-treated steel construction for superior strength and durability
- Prevents strapping from loosening during transit
- Long 18" handle requires less effort
- Offset jaws are longer on one side for better grip
- Specially designed for use with serrated seals
- Fits Strap Width: 5/8"



KLETON

**Model
No.**

**Promo
Price**

PF992

101.00

SERRATED STRAPPING SEALS

- Serrated seals for use with polyester strapping
- Type: Open
- Fits Strap Width: 5/8"
- Sold/Priced Per: Box
- Qty/Box: 1000



KLETON

**Model
No.**

**Promo
Price**

PF991

127.00/Box

ORANGE CITRUS CRAZY CLEAN®

- Cleans, deodorizes and degreases parts, work areas, walls, and floors
- Removes dirty hand prints, scuff marks, bathtub rings, soot, grease, smoke film, oil, dust, lipstick, crayon marks, etc.
- Easily wipes down washable painted surfaces, window sills, venetian blinds, porcelain, and tile
- Ecologically safe; formulated with orange citrus solvents
- Container Type: Aerosol Can
- Container Size: 19 fl. oz.

Sprayway



**Model
No.**

**Promo
Price**

JN578

8.25

CRAZY CLEAN® ALL PURPOSE CLEANER

- Multi-purpose cleaner for auto detailers, glass/mirror handlers, industrial maintenance, housekeeping personnel, or sign/display tradesmen
- Clinging foam cleans and deodorizes
- Removes hand prints, scuff and crayon marks, grease spots, soot stains, and smoke film
- Produces sparkling results when used on hard surfaces, on window sills, or venetian blinds
- Container Size: 20 oz.
- Container Type: Aerosol Can
- Colour: White
- Fragrance: Floral
- Spray Style: Solid Cone

Sprayway



**Model
No.**

**Promo
Price**

JL412

5.99

TRIPLE ACTION - CLEANER, DEGREASER & DISINFECTANT

- Cleans, degreases and disinfects in one easy step
- Reduce your inventory while simplifying your purchasing decision and maintenance program with this 3-in-1 cleaning solution
- Container Type: Jug
- Size: 5 L
- DIN: 02240187



**Model
No.**

**Promo
Price**

JG672

22.95

NILOZYME™ BIO-ENZYMATIC TRAP & DRAIN CLEANER

- A trap and drain treatment that will reduce maintenance of grease traps, septic systems and open clogged drains
- Nilozyme™ has a multi-strain bacterial formulation that will liquefy and digest complex proteins, cellulose and starch
- Nilozyme™ is resilient to bleach, disinfectants and many other cleaning chemicals
- Fragrance: Original



JM651

**Model
No.**

**Container
Type**

**Container
Size**

**Promo
Price**

JM651

Jug

1 gal.

24.99

JM650

Bottle

32 fl. oz.

7.99

EMERALD CLEANER & DEGREASER

- Powerful formula cuts through grease oil and heavy soiled surfaces
- Biodegradable and solvent-free
- Certified UL ECOLOGO® 2759
- Container Type: Jug
- Container Size: 4 L



**Model
No.**

**Promo
Price**

JD493

25.49

MICROWORKS® STANDARD CLOTHS

- Cleans without harmful chemicals
- Use wet or dry
- Non-abrasive
- Non-linting
- Material: Microfibre
- Qty/Pkg.: 12
- Dimensions: 16" x 16"
- Fabric Weight: 300 gsm



JM623

**Model
No.**

Colour

**Promo
Price**

JM623

Blue

19.95/Pkg.

JM624

Green

19.95/Pkg.

JM625

Red

19.95/Pkg.

JM626

Yellow

19.95/Pkg.

BUILT-IN PUMP SHOP VACUUM

- Features large tank drain and blower port
- The hose attaches to the rear blower port allowing you to blow the dirt out of those hard to reach places
- Type: Wet-Dry
- Material: Polycarbonate
- Tank Capacity: 18 US Gal. (68.1 Litres)
- Peak HP: 6 HP
- Motor Stage: 1-Stage
- Air Flow: 130 CFM
- Static Pressure: 50"
- Air Watts: 235 W
- Electrical Rating: 120 V 60 Hz 11.8 Amps

Includes: (1) Vacuum, (1) 22 Gallon high efficiency disposable filter bag (90673), (2) 2.5" Diameter extension wands (90684), (1) 14" Wet/dry floor nozzle (90677), (1) 8' Lock-On® hose, (1) 8" Utility nozzle (90675), (1) Concentrator nozzle (90683), (1) Crevice tool (90678), (1) Elbow grip, (1) Foam sleeve (90585 Type R), (1) Tool storage basket, (1) Cartridge filter (90304 Type U)



THE ONE & ONLY
shop-vac.

Model No.	Cord Length'	Hose Dia."	Hose Length'	Promo Price
EB335	20	2.5	8	525.00

WAVEBRAKE® MOP BUCKET & WRINGER COMBO PACK

- Less splashing while mopping and maneuvering, helping to create a safer environment for patrons and staff
- Reduces splashes up to 80%
- Integrated handles help ensure a secure grip to lift and empty the mop bucket



Model No.	Colour	Wringer Type	Bucket Capacity	Promo Price
JK634	Yellow	Side Press	8.75 US Gal.	137.00

ROUND BRUTE® CONTAINERS

- Extra strong polyethylene construction withstands bumps and kicks; will not rust, chip or peel
- Nest for easy storage and cleans easily due to seamless construction
- Built-in handles, double ribbed base and molded base grip for two-handed lifting
- Internal venting channels allow for easy removal of garbage bags
- Type: Bulk
- Capacity: 20 US gal.



NG250

Model No.	Dia."	Height"	Colour	Bag Size"	Promo Price
NG250	19.5	22.875	Blue	30 x 38	41.49
NA692*	19.5	22.875	White	30 x 38	41.49

* Accepted for use in Canadian food processing facilities

SVX2 SHOP VACUUM

- Cord storage
- The hose attaches to the rear blower port allowing you to blow the dirt out of those hard to reach places
- Powerful SVX2 Advanced Motor Technology
- Type: Wet-Dry
- Material: Stainless Steel
- Tank Capacity: 12 US Gal. (45.4 Litres)
- Peak HP: 6.5 HP
- Motor Stage: 1-Stage
- Air Flow: 105 CFM
- Static Pressure: 72"
- Air Watts: 325 W
- Electrical Rating: 120 V 60 Hz 12 Amps
- **Includes:** (1) Vacuum, (1) 14 Gallon high efficiency disposable filter bag (90672), (2) 1.5" Diameter extension wands (91985), (1) 12' Lock-On® hose (90625), (1) 14" Wet/dry floor nozzle (91916), (1) 16" Crevice tool (91998), (1) Adaptor (91984), (1) Claw utility nozzle (91961), (1) Foam sleeve (90585 Type R), (1) Tool storage basket, (1) Ultra-Web® cartridge filter (90350, Type I)



THE ONE & ONLY
shop-vac.

Model No.	Cord Length'	Hose Dia."	Hose Length'	Promo Price
EB339	20	1.5	12	534.00

SWINGER™ BLEND WET MOPS

- Made with 4-ply Rayon/Polyester blended yarns and some added cotton that can withstand repeated laundering
- Break-in is not necessary
- Highly absorbent mop with mid retention is perfect for general cleaning or any restaurant environments
- Type: General Use
- Style: Loop
- Colour: Blue
- Band Width: Narrow

JN055

JM894



Model No.	Description	Promo Price
JM894	16 oz. Swinger™ Blend Wet Mop	7.63
JM895	20 oz. Swinger™ Blend Wet Mop	8.75
JM896	24 oz. Swinger™ Blend Wet Mop	9.73
JM897	32 oz. Swinger™ Blend Wet Mop	11.83
JL804	54" Step-N-Go Fibreglass Mop Handle	19.99
JN055	60" Step-N-Go Fibreglass Mop Handle	19.95

FAN FORCED CONTRACTOR HEATERS

EB100

- Built-in thermostat
- Safety high temperature limit
- Built-in handle/cord storage
- Permanently lubricated motor
- 6' heavy-duty cord
- Steel spiral fan brazed to metal sheath elements for maximum heat transfer
- Voltage: 240 V
- Plug Type: #6-30P



EA477



Model No.	Motor Type	BTU/H Rating	Amperage	Wattage	Promo Price
EB100	Closed	16 380	20	4800	170.00
EA477	Open	19 100	23.34	5600	225.00

PORTABLE INFRARED HEATER

- Provides instant sun-like heat that directly warms objects
- Adjustable thermostat
- Cool touch flame-resistant plastic housing
- Overheat and tip over shut-off
- Type: Radiant Heat
- Min. BTU/H Rating: 2560 BTU/H
- Max. BTU/H Rating: 5120 BTU/H
- Amperage: 12.5 A
- Voltage: 120 V
- Wattage: 750/1500
- Overall Dim.: 13" W x 9.3" D x 23" H



Model No.	Promo Price
EB184	96.60

PORTABLE CERAMIC HEATER

- Two heat settings (1500 W and 900 W) provide full comfort and efficient operation
- Adjustable thermostat
- Big carry handle
- Adjustable vertical tilt angle
- Min. BTU/H Rating: 2560 BTU/H
- Max. BTU/H Rating: 5200 BTU/H
- Voltage: 120 V



Model No.	Promo Price
EA650	91.00

ANTI-SLIP ICE CLEATS

- Special non-slip studs offer excellent traction on ice and snow
- Non-slip flexible ice cleats
- Includes 10 durable spikes
- Made from thermoplastic elastomer
- Flexible up to -40°C
- Traction Material: Steel
- Traction Type: Stud



Boot Not Included

Model No.	Size	Fits Shoe Size	Promo Price
SEA004	Medium	5-8	13.95/Pair
SEA005	Large	8-11	13.95/Pair
SEA006	X-Large	11-13	13.95/Pair

HEAVY-DUTY ANTI-SLIP ICE CLEATS

- Hexagonal, non-slip studs offer excellent traction on ice and snow
- Non-slip heavy duty flexible rubber boot
- Includes 12 durable spikes
- Made from thermoplastic elastomer
- Flexible up to -40°C
- Traction Material: Steel
- Traction Type: Stud



Model No.	Size	Fits Shoe Size	Promo Price
SDN085	Medium	5-8	17.95/Pair
SDN086	Large	8-11	17.95/Pair
SDN087	X-Large	11-13	17.95/Pair

ANTI-SLIP SPARK-PROOF ICE CLEATS

- Non-slip studs offer excellent traction on ice and snow
- Includes 10 durable brass spikes
- Made from thermoplastic elastomer
- Flexible up to -40°C
- Non-slip, heavy-duty, flexible rubber boot
- Traction Material: Brass
- Traction Type: Stud



Boot Not Included

Model No.	Size	Fits Shoe Size	Promo Price
SGO246	Medium	5-8	18.95/Pair
SGO247	Large	8-11	18.95/Pair
SGO248	X-Large	11-13	18.95/Pair

Pricing in effect until December 23, 2022 or while quantities last. Taxes and freight extra. Issue #SDM222100NA

Due to recent commodity and market volatility, prices are subject to change, and may vary without prior notice.